



**SIGN UP for CITY ALERT NOTIFICATIONS**

The Nixle instant messaging system is the City's primary means of electronically notifying residents of weather alerts, utility emergencies and other public service information. Sign up through the City's web site or at [www.nixle.com](http://www.nixle.com)

**ITS STILL WINTER**

Although the calendar says Spring, there may still be more snow. Please help snow plow crews by Moving your vehicle off the street before each snow

**UTILITY BILL CHANGES**

**Level Monthly Payment Option**

Starts with the August Billing.

Call 858-3046 now for information and sign up

**Auto Bill Pay**

Available now. No cost auto pay options available

**Credit/Debit Card Fee Increase**

Effective May 1 cost will be \$2.75/use

**Deposit Increase**

Effective May 1 residential deposit will be \$150

Deposit reduced to \$125 if customer signs up for auto pay

Call City Hall at 858-3046 or on line at [WWW.plattecity.org](http://WWW.plattecity.org)

**Meeting Schedules**

- Mar 3 Public Safety 5:30pm, City Hall  
Parks and Rec 6:30pm, Civic Ctr
- Mar 4 Pub Works 5:30pm, City Hall  
Municipal Ct 6:00pm Civic Center
- Mar 17 Economic Development 5:30pm  
City Hall
- Mar 24 Board of Aldermen, 7:00pm-  
City Hall
- Apr 6 Public Safety 5:30pm, City Hall  
Parks and Rec 6:30 pm Civic Ctr
- Apr 7 Public Works 5:30pm, City Hall  
Municipal Ct 6:00pm Civic Ctr  
Planning and Zoning Workshop-  
7:00pm, City Hall
- MUNICIPAL ELECTION DAY
- Apr 21 Economic Development 5:30pm,  
City Hall
- Apr 28 Board of Aldermen, 7:00pm City  
Hall

**Municipal Election,  
Tuesday, April 7**

**City Green/Yard Waste Facility Open March 1**

**ACCESS CARDS NOW AVAILABLE\$**

\$20 per season access card required. Cards available at City Hall, 858-3046

Call City Hall for payment options

March 1st through November 30th: Platte City residents only

Green Waste Facility is located at the west end of Mill Street near the City sewer plant inside Riverview Park

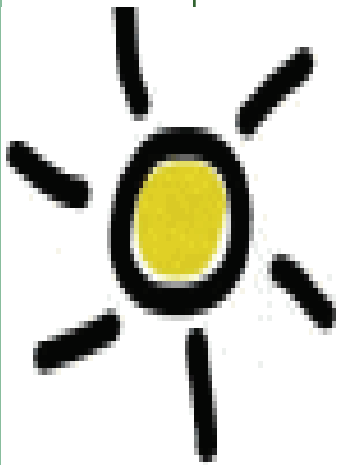
Brush, yard clippings, shrubbery, limbs and other green waste only

**City of  
Platte City**

400 Main Street  
Platte City, Mo 64079

(816) 858-3046

[www.plattecity.org](http://www.plattecity.org)



## Recreation Sign Up

Softball Sign up Ends: March 15

Baseball Sign up Ends: March 15

POOL OPENS: MAY 23

Swim Lesson Sign up Starts: MAY 2015

## ON LINE UTILITY BILL MANAGEMENT

Platte City Utility Options

EMAIL BILLS  
AUTO BILL PAY  
LEVEL PAY  
(coming soon)

Make utility bill paying easy

See your options at  
[www.plattecitecity.org](http://www.plattecitecity.org)

## Sidewalk Replacement Cost Share Program

Platte City will share the cost of repairing or replacing the sidewalk in front of your home.

Property owners are responsible for maintaining sidewalks in a state of good repair. The cost share program will assist in paying for this work. **Call 858-4815 for eligibility information.**

## Platte City has summer jobs!

Seasonal, part time positions available for:

- Lifeguards and Pool Manager
- Concession Stand Workers
- Umpires and Referees

Call 858-5627 or 858-3046 for more information

## SPRING CLEAN-UP

Our annual spring clean-up will be April 21-25, 2015. Put out furniture, appliances and tires for free pick-up on your normal trash day. Please no hazardous material. Contact public works at 858-4815 if you have any questions.

## RECYCLING HELP

It's been over a year since we introduced the larger recycling carts and expanded the type of recyclable material accepted. Thanks to our residents who choose to recycle; each month we send about 16 tons of material to a recycling center instead of the landfill. If you recycle a lot of cardboard we would appreciate it if you would tear the boxes down. It keeps our equipment running smoothly and our crew on the go!

## Don't Forget the Building Permit

A Building Permit may be needed for remodeling and construction projects, especially for changes to plumbing, electric, other utilities, raised decks, building structure, all new construction and all commercial projects.

Contact Platte City Building Officer at [agustin@plattecitecity.org](mailto:agustin@plattecitecity.org) or 858-3617

## Help Keep Shoes Clean

### Be a courteous dog walker!

Please carry and use pooper scoopers or plastic bags to clean up after your pet.

